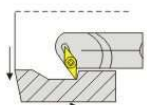


# 内孔车刀(螺钉式) Boring Bars (S-type)

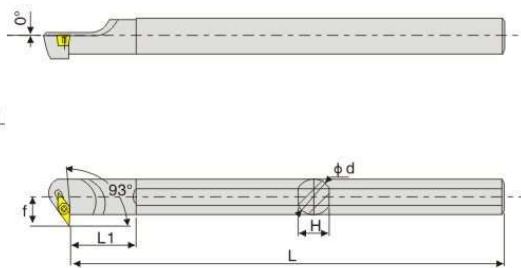
## SVZ\*R/L



主偏角93°  
Cutting edge angle



仿形、盲孔加工  
Profile and blind hole machining

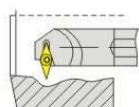


型号 Model	刀片 Insert	适用条件 Applicable conditions								配件 Accessories	
		$\phi D_{min}$	$\phi D$	f	L	L1	H	$\alpha^\circ$ B C		螺丝 Screw	扳手 Wrench
S16Q-SVZ-R/L11	VC□□1103□□ VB□□1103□□	$\phi 22$	$\phi 16$	11.5	180	34	15	10°	8°	M2.5×6	T8
S20R-SVZ-R/L11		$\phi 27$	$\phi 20$	14	200	38	19	8°	6°		
S25S-SVZ-R/L16	VC□□1604□□ VB□□1604□□	$\phi 34$	$\phi 25$	19.5	250	50	20	8°	6°	M4×10	T15
S32T-SVZ-R/L16		$\phi 42$	$\phi 32$	23.5	300	50	30	10°	8°		
S40U-SVZ-R/L16		$\phi 50$	$\phi 40$	27	350	60	38	8°	6°		

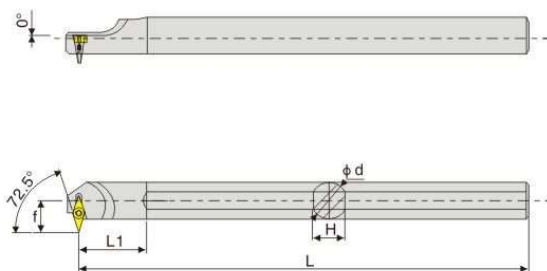
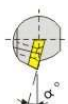
# 内孔车刀(螺钉式) Boring Bars (S-type)

## SVW\*R/L

主偏角72.5°  
Cutting edge angle



仿形、盲孔加工  
Profile and blind hole machining



型号 Model	刀片 Insert	适用条件 Applicable conditions								配件 Accessories	
		$\phi D_{min}$	$\phi D$	f	L	L1	H	$\alpha^\circ$ B C		螺丝 Screw	扳手 Wrench
S25S-SVW-R/L16	VC□□1604□□ VB□□1604□□	$\phi 38$	$\phi 25$	23	250	33	24	6°	5°	M4×10	T15
S32T-SVW-R/L16		$\phi 45$	$\phi 32$	26	300	41	30	6°	5°		